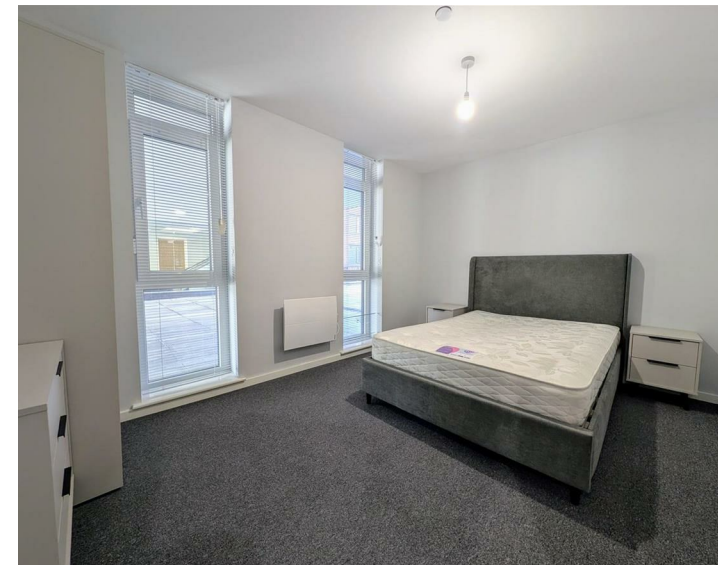




Apt 14, All Six House Derby Square, Liverpool, L2 7AB  
£950 (From) Per Calendar Month

www.  
cityresidential  
.co.uk



About the Property

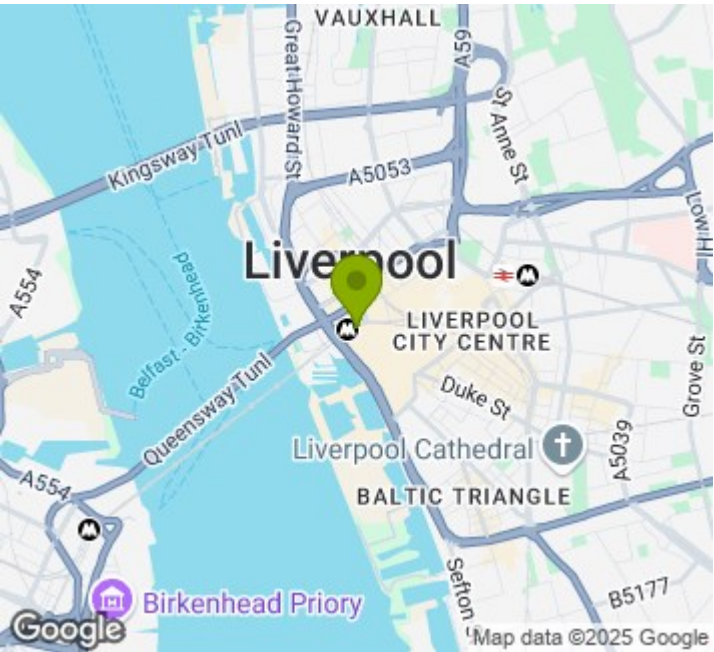
AVAILABLE NOW! This exceptional one bedroom apartment in the prestigious All Six House development offers the perfect blend of modern luxury and unbeatable convenience.

Located on Derby Square, the development is excellently positioned for the extensive mix of bars, restaurants, shops and entertainment options located on both Castle Street and in the Liverpool One shopping centre. The development also benefits from excellent transport links with James Street Station being literally on your door step.

The apartment briefly comprises; spacious open-plan living and dining area, fully fitted contemporary kitchen which is fitted with high-quality integrated appliances, a generously sized double bedroom and a well-appointed main bathroom

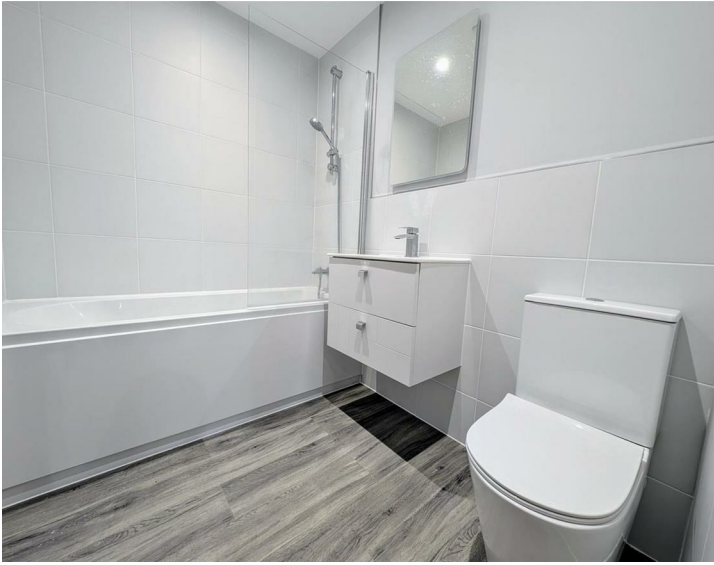
Contact us today on 0151 231 6100 to arrange a viewing!

- Immediate Move In
- Fully Furnished One Bedroom Apartment
- Coworking Space & Bike Storage
- Council Tax Band - C
- EPC - D
- Deposit - £1096



Energy Efficiency Rating

	Current	Potential
Very energy efficient - lower running costs		
(92 plus) <b>A</b>		
(81-91) <b>B</b>		
(69-80) <b>C</b>		
(55-68) <b>D</b>	<b>63</b>	<b>63</b>
(39-54) <b>E</b>		
(21-38) <b>F</b>		
(1-20) <b>G</b>		
Not energy efficient - higher running costs		
<b>England &amp; Wales</b>	EU Directive 2002/91/EC	



City Residential  
81/87 Victoria Street, The Old Haymarket, Liverpool L1 6DG  
T: 0151 231 6100 F: 0151 231 6105  
E: sales@cityresidential.co.uk



WWW.  
cityresidential  
.co.uk